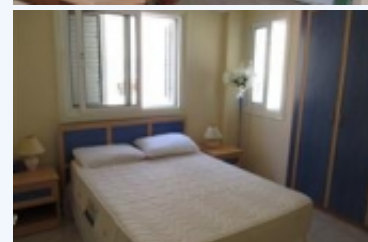
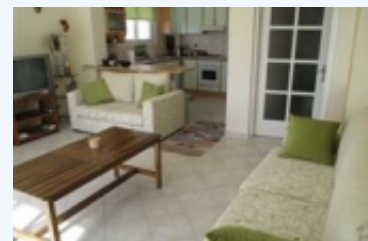


BPGI006, OPEN-PLAN 2 BEDROOM
PENTHOUSE WITH MASSIVE TERRACE

Sold. £ 69,950



A beautiful, spacious 2 bedroom penthouse in the city centre with a very large terrace. There are fantastic views, overlooking the new harbor and the Mediterranean sea. All furniture and white goods are included. There is air conditioning and the bedrooms have fitted wardrobes. The site is very well maintained and has a garden area with a communal pool. There is reserved parking under the building.

BASE INFORMATION:

Bed	: 2
Bath	: 1

CONVENIENCE: